

Web-enabled Neighbourhood Planning Michael Kohn & Lorna Parsons Slider Studio

- | | | |
|---|--|---------|
| 1 | Michael Kohn - Introduction to Slider Studio | 5 mins |
| 2 | Lorna Parsons - Summary of Neighbourhood Planning Workshops | 10 mins |
| 3 | StickyWorld Case Studies:
Bloomsbury Association
Burslem, Stoke-on-Trent | 20 mins |
| 4 | Q & A | 20 mins |
| 5 | Round-up | 5 mins |

Neighbourhood Planning Workshops

Workshops in Birmingham and London

Participants:

Leaders - community representatives

Supporters - local authorities, public sector bodies

Advisors - professional consultants

Structure of Workshop:

Opening - Fast and broad gathering of thoughts

Exploring - Experimental and constructive responses

Closing - Share and find recurrent themes

Neighbourhood Planning Workshops Summary of Findings

How can the web enable neighbourhood planning?
Post Workshop Analysis Report

22 July 2011

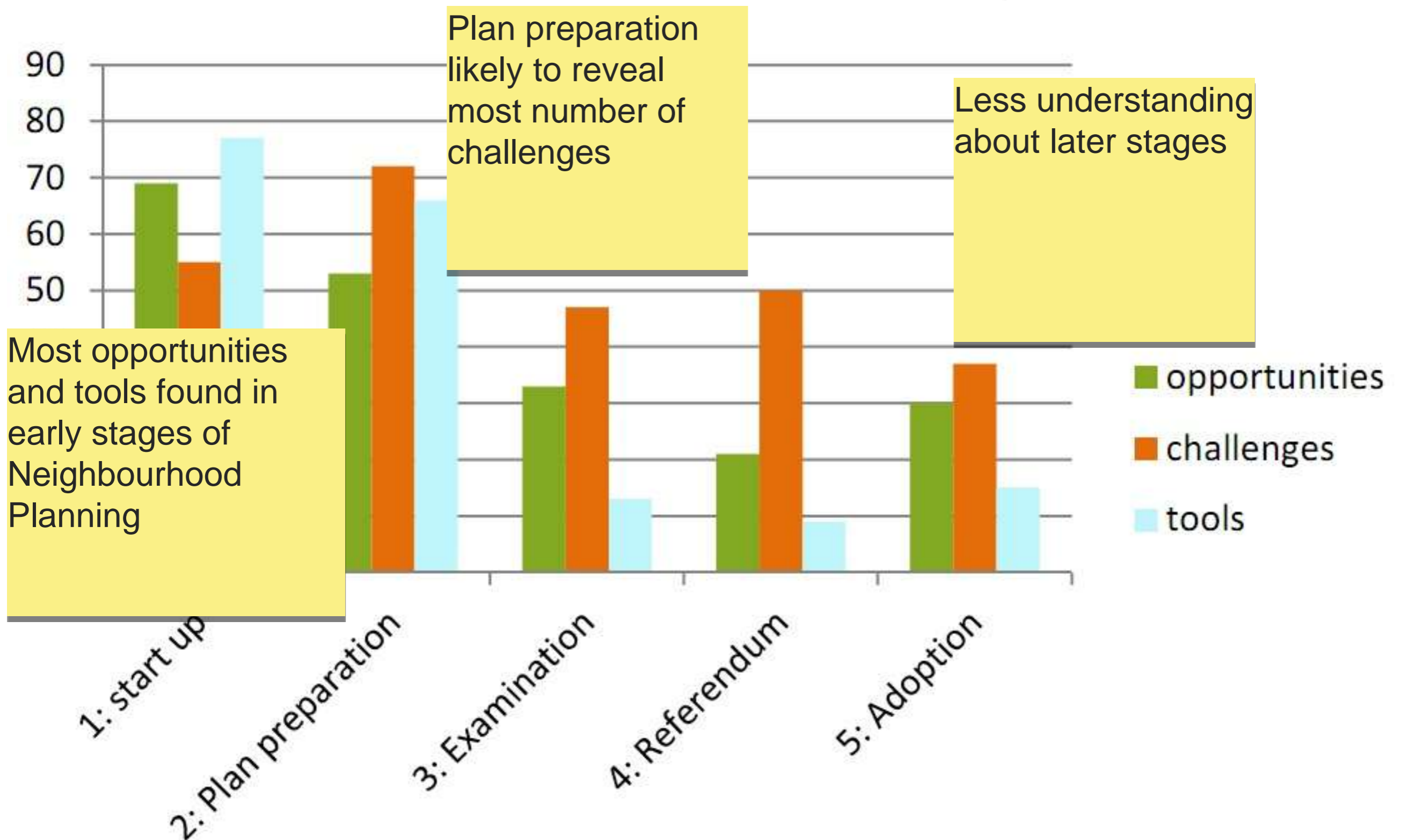
2 PLAN PREPARATION:
Direct plans prepared with support from web with community engagement

4 REFERENDUM:
Referendum organised by local authority to decide on adoption

sliderstudio StickyWorld™ Technology Strategy Board
Driving Innovation

Neighbourhood Planning Workshops

Summary of Findings



Neighbourhood Planning Workshops

Summary of Findings

Key issues revealed in NP Workshops:

- Lack of clarity over funding
- Definition of neighbourhood boundaries potentially problematic
- Need for fair community representation
- Alignment of NP with wider policies
- Groups interrelations and power sharing
- Opportunities for professional development

Neighbourhood Planning Workshops Summary of Findings

?! What is Kickstarter? We're the world's largest funding platform for creative projects. [Learn more!](#)

KICKSTARTER Discover great projects Start your project

BLOG HELP SIGN UP LOG IN

A NEW WAY TO
Fund & Follow Creativity

FEATURED IN CNN WIRED GOOD Pitchfork npr The New York Times

PROJECT OF THE DAY

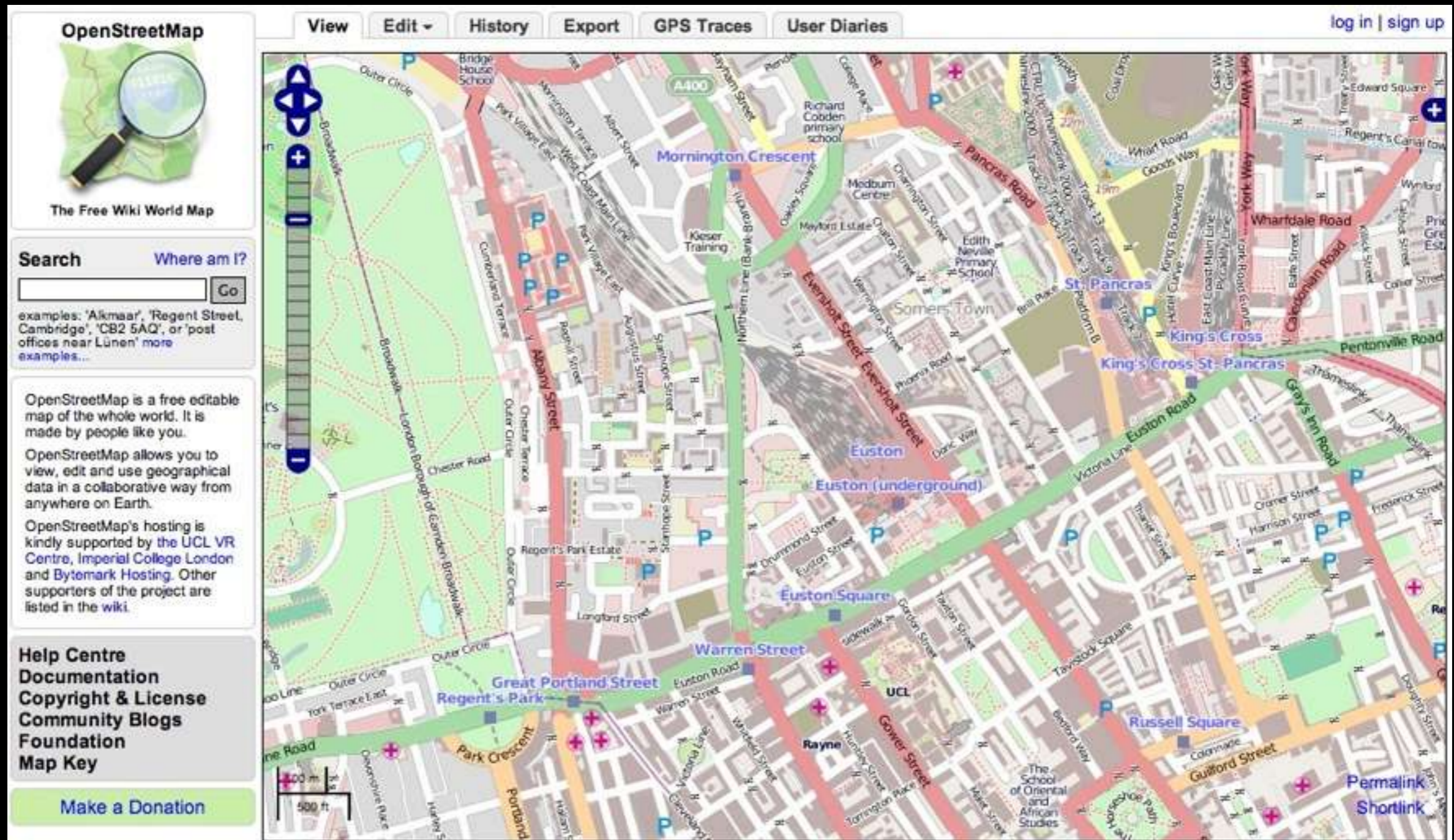
BlindSide: The Audio Adventure Video Game
by Aaron & Mike
BlindSide is a survival/horror adventure game with no graphics at all. Navigate a 3D world using only your ears and what's between them.
Queens, NY

DOCUMENTARY

Good Ol' Freda
by Tripod Media
"Good Ol' Freda" is the untold story of Freda Kelly, the Beatles' trusted secretary and friend throughout their rise to fame.
Los Angeles, CA

SOLUTION: Funding

Neighbourhood Planning Workshops Summary of Findings



SOLUTION: Neighbourhood boundaries

Neighbourhood Planning Workshops

Summary of Findings

openlylocal *making local government more transparent*

ALL COUNCILS HYPERLOCAL SITES DIRECTORY OPEN DATA SCOREBOARD COUNCIL SPENDING Search by postcode

Openly Local is a new project to develop an open and unified way of accessing Local Government information.

So far we have opened up data for over 140 local authorities, and more are being added every week, with more information being opened up too.

We currently have information on:

- 163 councils
- 11,409 councillors
- 6,701 committees
- 76,495 committee meetings
- 492 hyperlocal sites
- 44,086 documents
- Over 270,956 pieces of data
- 2,355,686 financial transactions

Most of the data is accessible as XML or json data through a simple API (basically add .xml or .json to the main part of the URL). There is also a Google Gadget, an app for Hyperlocal sites using Ning, and a simple javascript widget

Openly Local news

OCTOBER 10 2011, 3.33PM
PlanningAlerts is dead, long-live PlanningAlerts
One of the first and best examples of how data could make a difference to ordinary people's lives was the inspirational PlanningAlerts.com, b...

FEBRUARY 23 2011, 11.15AM
A first look at the council spending data: Â£10bn, 1.5m payments, 60,000 companies
Like buses, you wait ages for local councils to publish their spending data, then a whole load come at once... and consequently OpenlyLocal has...

FEBRUARY 22 2011, 11.32PM
Videoing council meetings redux: progress on two fronts
Tonight, hyperlocal bloggers (and in fact any ordinary members of the public) got two great boosts in their access to council meetings, and their a...

Most recently updated councils

- **UPDATED** Manchester City Council
- **UPDATED** London Borough of Ealing
- **UPDATED** Lancashire County Council
- **UPDATED** Wigan Metropolitan Borough

Latest councillors

- **Walsall Metropolitan Borough Council** **NEW**
Julie Fitzpatrick
- **East Staffordshire Borough Council** **NEW**
Beryl Behague

Forthcoming meetings

- **Birmingham City Council** **NEW** Local Services and Community Safety Overview and Scrutiny Committee meeting, Nov 8 2011, 4.00PM
- **Knowsley Metropolitan Borough** South Kirkby

SOLUTION: Community Representation

Neighbourhood Planning Workshops Summary of Findings

Neighbourhood Planning seminar

About | Contact | Share | Help | Exit

urbanvision
ENTERPRISE LLC

RIB

22: Neighbourhood Planning Process

Lorna Parsons 22/Oct
Dave Chetwyn's slide showing Neighbourhood Planning as a step-by-step process

Subscribe Mark unread

Type your reply here...

Close Reply

People (5) | Work (13) | Notes (8) Filters All work

100%

SOLUTION: Alignment with planning policies

Neighbourhood Planning Workshops Summary of Findings

The screenshot displays the homepage of the community planning.net website. On the left is a vertical navigation menu with links such as 'About this Site', 'Case Studies', 'Consultants A-Z', 'Funding A-Z', 'Glossary A-Z', 'Methods A-Z', 'Opportunities A-Z', 'Policy & Law', 'Principles A-Z', 'Projects A-Z', 'Publications & Films A-Z', 'Scenarios A-Z', 'Special features', 'Toolbox', 'Training A-Z', 'Videos & Slide Shows', 'Websites A-Z', 'What's New', 'Contact us', 'Marketing', 'Feedback', and 'Print this page'. At the bottom of the menu is a Facebook link and the copyright notice '© 2011 Nick Wales Associates'. The main content area features a grid of eight photographs showing community planning activities: a person in a hard hat, a group sitting on the floor, a person pointing at a screen, a group around a table, a map, people at a table, two people in hard hats, and a street scene. Below the grid is the text 'the community planning website helping people shape their cities, towns and villages in any part of the world'. To the right of the grid is a search bar with 'Google Custom Search' and a 'find' button. Below the search bar is an 'awards' section mentioning the 2009 Royal Town Planning Institute Awards. Further down is a 'FREE TRAINING WORKSHOPS AND STUDY TOURS ON COMMUNITY PLANNING AND DESIGN' banner. At the bottom right are logos for 'Communities and Local Government', 'BUILDING COMMUNITY Helping people shape places', and 'Nick Wales Associates'. A black box at the bottom contains the text 'Supporting Communities & Neighbourhoods in Planning' and 'This website has been selected as a key resource for a UK government funded service providing free support on planning to communities in England.', with a 'More details' link.

community planning.net

About this Site
About Community Planning
Case Studies
Consultants A-Z
Contacts A-Z
Funding A-Z
Glossary A-Z
Methods A-Z
Methods - Featured
Opportunities A-Z
Policy & Law
Principles A-Z
Projects A-Z
Publications & Films A-Z
Scenarios A-Z
Special features
Toolbox
Training A-Z
Videos & Slide Shows
Websites A-Z
What's New
Contact us
Marketing
Feedback
Print this page

Our Facebook community

© 2011 Nick Wales Associates

Sitemap / index
Google Custom Search find

awards
This website was a Finalist in the 2009 Royal Town Planning Institute Awards for advancing 'significantly the science and art of town planning'
Press release and shortlist

FREE
TRAINING WORKSHOPS AND STUDY TOURS ON COMMUNITY PLANNING AND DESIGN

Communities and Local Government

BUILDING COMMUNITY
Helping people shape places

Nick Wales Associates

the community planning website helping people shape their cities, towns and villages in any part of the world

Supporting Communities & Neighbourhoods in Planning

This website has been selected as a key resource for a UK government funded service providing free support on planning to communities in England.

More details

SOLUTION: Interrelations and power sharing

Neighbourhood Planning Workshops Summary of Findings



SOLUTION: Professional development

Neighbourhood Planning

Bloomsbury Village Manage Room About Contact Help Exit

MAP

54: Museum Street Streetscape

Jim Murray 24/Oct
This was a significant improvement to the street directly outside the BM although we did ask for the pedestrian crossing to be much wider. It is noticeable that traffic slows when the surface changes.

Subscribe Mark read

Type your reply here...

Close Reply

People (12) | **Work (19)** | Notes (21) | Filters | All work

Navigation icons: Hand, Search, Rotate, Hide, Full Screen


Thumbnail gallery: 10 images showing various street views of Bloomsbury.

Neighbourhood Planning

Neighbourhood Planning seminar

About | Contact | Share | Help | Exit | Sign In


10: Ward Boundary

 **Rob Annable** 20/Oct
Extent of Burslem Ward boundary

Subscribe Mark unread

Type your reply here...

Close Reply



chat

People (4) | **Work (13)** | Notes (8) | Filters | All work

